



**PIRNAR**

SINCE 1968

O P T I M U M

OFFER OF THE YEAR 2021





Take a look at the latest video content in  
**PIRNAR's** digital world!



WWW.PIRNAR.CO.UK



**PIRNAR**

# Maximum value

The entirely new **OPTIMUM** collection **pushes the boundaries of what is possible**. Its special construction is made primarily out of carbon fiber. Due to the rigidity of the construction, this is the door with **the best sealing and resistance to extreme weather conditions**. All doors can be upgraded with RC2 standard for burglar resistance. Never before has this class of front doors been so sophisticatedly constructed, with so many superior features.

## NEW LIMITS OF WHAT IS POSSIBLE

WATERTIGHTNESS



**600** Pa

AIR PERMEABILITY



**4**

THERMAL TRANSMITTANCE

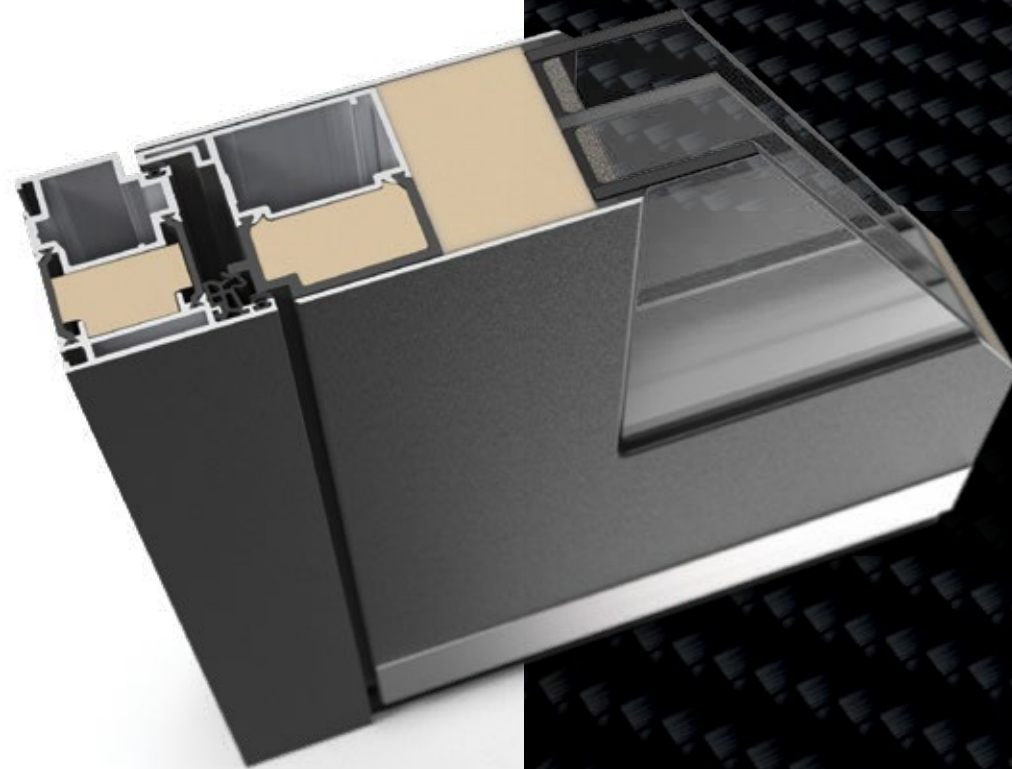


**0,71** W/(m<sup>2</sup>K)

---

# The strongest construction

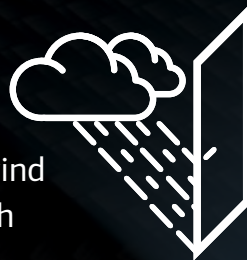
CarbonCore is the only patented **carbon construction** developed exclusively for entrance doors. Carbon fibres are extremely light, rigid and significantly stronger than steel, which is why they are used in state-of-the-art aircraft as well as the most prestigious **PIRNAR** front doors. There is no warping of the doors, be it in the scorching sun or in the coldest of winter. Because they seal better, there is no draft. Opening is completely effortless. **PIRNAR CarbonCore** is by far the **strongest construction** found in this class of entrance doors.







**CarbonCore &  
Magnet WeatherSeal**  
600 Pa Watertight at wind  
speeds of up to 114 km/h



---

## Doors that seal like a wall

**PIRNAR CarbonCore** doors are a combination of two innovations: the extremely rigid carbon fibre construction and the Magnet WeatherSeal magnetic seal. In the German testing laboratory Ift Rosenheim the doors have been accredited with the exceptional 9A watertightness rating, as they remained completely watertight at a pressure of 600 Pa, which corresponds to wind speeds of 114 km/h. **This is as much as six times the strain that a normal entrance door can withstand.** This simply means: no drafts and leakage, regardless of the strength of the wind or storm.



Welcome to  
**PIRNAR's**  
digital world





## *Timeless elegance*

Lovers of modern clean architecture will find the right entrance door here.





**7211**

*Colour FS 9016 / Handle 9613 / Stainless steel protective trim 6267*



**7110**

*Colour FS 7016 / Peephole 6202-1 / Personalized handle ROUND180 with illumination LABELUX / Reliable locking system with SECURO finger scanner in the handle and ARMO COMFORT ELECTRO lock / Stainless steel protective trim 6203*



**7200**

*Colour 80077 / Additional paint outside wood decor NATURAL OAK / Handle ANGULAR115 NERO /  
Reliable locking system with SECURO finger scanner in the handle and ARMO COMFORT ELECTRO lock /  
Frontal ambient lighting LUX 6949*



**7210**

*Colour 80077 / Additional paint outside wood decor TWISTED OAK / Handle ROUND115 /  
Reliable locking system with SECURO finger scanner in the handle and ARMO COMFORT ELECTRO lock /  
Stainless steel protective trim 6267*





## *A contemporary home*

These are the entrance doors for people who like elegance but also enjoy a playful touch.



**7480**

*Colour 9005 FS / Additional paint outside wood decor OLIVE / Door leaf horizontal pattern / Glass motif sandblasted / Handle ANGULAR180 NERO / Reliable locking system with SECURO finger scanner in the handle and ARMO COMFORT ELECTRO lock*



**7500**

*Colour FS 9016 / Handle 9617 with LUX illumination / Reliable locking system with SECURO finger scanner and ARMO COMFORT ELECTRO lock / Stainless steel protective trim 6267*





**7490**

*Colour 80077 / Glass motif sandblasted / Handle 9617 with LUX illumination /  
Reliable locking system with SECURO finger scanner and ARMO COMFORT ELECTRO lock*



*Elegant recessed  
handle with LUX  
illumination*



**7290**

Colour 80077 / Glass motif sandblasted / Handle ROUND95 / Reliable locking system with SECURO finger scanner in the handle and ARMO COMFORT ELECTRO lock / Stainless steel protective trim 6203 with ambient lighting LUX

**7280**

Colour 70161 / Additional paint outside 70105 / Glass motif sandblasted / Handle ROUND95 / Reliable locking system with SECURO finger scanner in the handle and ARMO COMFORT ELECTRO lock / Stainless steel protective trim 6267



**7160**

Colour FS 9016 / Glass motif sandblasted / Handle ROUND55 / Reliable locking system with SECURO finger scanner and ARMO COMFORT ELECTRO lock / Stainless steel protective trim 6267







**7471**

*Colour 70105 / Glass motif sandblasted / Handle ROUND95 / Reliable locking system with SECURO finger scanner in the handle and ARMO COMFORT ELECTRO lock / Stainless steel protective trim 6267*



**7470**

*Colour FS 9016 / Glass motif sandblasted / Personalized handle ROUND150 with illumination LABELUX / Reliable locking system with SECURO finger scanner in the handle and ARMO COMFORT ELECTRO lock / Stainless steel protective trim 6203*



## *Symphony in wood decor*

This is what we hear when we combine modern minimalism with the warmth of nature.

28

### **7320**

*Colour wood decor NATURAL OAK / Additional colour FS 9005 /  
Door leaf horizontal pattern / Satinato glass / Handle ANGULAR150 NERO /  
Reliable locking system with SECURO finger scanner in the handle and ARMO  
COMFORT ELECTRO lock*





**7180**

*Colour FS 7016 / Satinato glass / Handle ROUND75 / Reliable locking system with SECURO finger scanner in the handle and ARMO COMFORT ELECTRO lock*



**7310**

*Colour FS 9016 / Satinato glass / Handle ROUND55 / Reliable locking system with SECURO finger scanner and ARMO COMFORT ELECTRO lock / Stainless steel protective trim 6267*



**7410**

*Colour FS 8019 / Glass motif sandblasted / Handle ANGULAR135 with LUX illumination / Reliable locking system with SECURO finger scanner in the handle and ARMO COMFORT ELECTRO lock / Stainless steel protective trim 6267*



**7460**

*Colour 70105 / Glass motif sandblasted / Handle ROUND170 / Reliable locking system with SECURO finger scanner in the handle and ARMO COMFORT ELECTRO lock / Stainless steel protective trim 6203 / Frontal ambient lighting LUX 6273*





## *Sober precision*

This is the home of people  
with an appreciation of detail.

### **7450**

*Colour 90147 / Glass motif sandblasted / Handle ROUND150 /  
Reliable locking system with SECURO finger scanner in the handle and  
ARMO COMFORT ELECTRO lock / Stainless steel protective trim 6203 /  
Frontal ambient lighting LUX 6273*



## *Upbeat urban feel*

The right entrance door for those who enjoy the hustle and bustle of city life.

### **7150**

*Colour RAL 9006 / Satinato glass / Handle ROUND150 / Reliable locking system with SECURO finger scanner in the handle and ARMO COMFORT ELECTRO lock / Stainless steel protective trim 6203 / Frontal ambient lighting LUX 6949*





**7270**

*Colour 9005 FS / Additional paint outside wood decor TWISTED OAK / Satinato glass / Handle ROUND135 NERO / Reliable locking system with SECURO finger scanner in the handle and ARMO COMFORT ELECTRO lock*



**7130**

*Colour FS 7016 / Glass motif sandblasted / Handle 9110 / Reliable locking system with SECURO finger scanner and ARMO COMFORT ELECTRO lock / Stainless steel protective trim 6267*

*Seductive softness*

For those who take time for the beautiful things in life.

23







**7330**

*Colour 70161 / Additional paint outside BLACK OAK / Glass motif sandblasted / Handle 9110 / Reliable locking system with SECURO finger scanner and ARMO COMFORT ELECTRO lock / Stainless steel protective trim 6267*



**7230**

*Colour 70105 / Additional paint outside 70161 / Glass motif sandblasted / Handle 9103 / Reliable locking system with SECURO finger scanner and ARMO COMFORT ELECTRO lock / Stainless steel protective trim 6203*



Welcome to  
**PIRNAR's**  
digital world



**7190**

Colour FS 6005 / Glass motif sandblasted / Handle ROUND55 / Stainless steel protective trim 6203



**7370**

Colour FS 8019 / Glass motif sandblasted / Handle ROUND55 / Stainless steel protective trim 6203



## *Dignity of tradition*

For houses and people that are proud of their origins and their past.

### **7340**

Colour FS 7016 / Glass motif sandblasted /  
Handle ROUND55 / Stainless steel protective trim 6203



*Passion for life*

Every moment in life is there to be enjoyed, and that includes the moment when you arrive home.







Welcome to  
**PIRNAR's**  
digital world



**7390**

*Colour RAL 9016 / Glass motif sandblasted / Handle ROUND75 /  
Stainless steel protective trim 6267*



**7300**

*Colour RAL 9016 / Glass motif sandblasted / Handle ROUND55 / Stainless steel protective trim 6203*



SPECIAL  
**LUX**  
ILLUMINATION

---

# Magical

When the sun goes down and the first stars appear in the sky, the **PIRNAR** entrance also becomes alive. A perfection of form and colour, which inspires during the day, is at night replaced by the beauty of light. In some places the light is softly diffused and elsewhere richly intense LUX lighting creates a completely new look and feel of your door. For you, as the owner, the entrance becomes a warm invitation into your own home.

At the same time, it gives your visitors a sense of playful refinement which gives rise to ever new sighs of admiration. Only then it seems to us that the house really comes alive.

RECOMMENDED  
UPGRADE



Welcome to  
**PIRNAR's**  
digital world



---

# Elegant glass

The **OPTIMUM** collection also includes a unique selection of doors with a glass cover. This gives your door an extremely sophisticated, minimalist and glamorous look. Combine this with side panels to create an elegant impression of a large area of glass with a beautifully coherent design. Are you looking for the perfect finishing touch? Try adding a matte black door handle.



*Glass discretion*

Glamorous glass that allows no  
roaming eyes into your privacy

27





**7510**

*Colour FS 7016 / Glass ESG NIGHT SKY GLOSS / Handle 9617 with LUX illumination / Reliable locking system with SECURO finger scanner and ARMO COMFORT ELECTRO lock*



**7510**

*Colour FS 7016 / Glass ESG NIGHT SKY GLOSS / Handle ANGULAR180 NERO / Reliable locking system with SECURO finger scanner in the handle and ARMO COMFORT ELECTRO lock*



# Exceptional CarbonCore construction

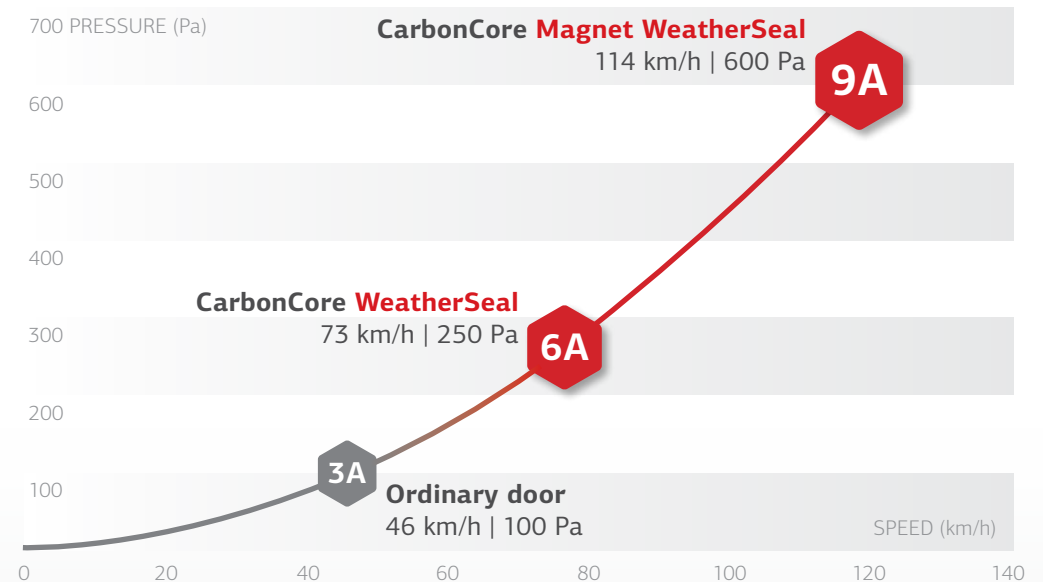


When the weather is nice, the seal of every new door works perfectly. Eventually, some warp, cold air enters the house underneath them or at the sides and creates an unpleasant draft. After a few years of bracing all kinds of weathers, the seal loosens. It gets even worse in stormy weather when rain and wind beat against the door.

Most of the new entrance doors on the market are watertight to wind speeds of about 50 km/h. **PIRNAR CarbonCore doors with Magnet WeatherSeal have been accredited with the exceptional 9A watertightness rating in laboratory tests, as they remained completely watertight at a pressure of 600 Pa, which corresponds to wind speeds of 114 km/h. This is as much as six times the strain that a normal entrance door can withstand.**



## CarbonCore Watertightness



Watertightness standard classification – Class 1A (worst) to Class 9A (best).  
Air permeability standard classification – Class 1 to 4 (worst to best).



## CarbonCore LEVEL

## CarbonCore SOFT



### CarbonCore WeatherSeal

THERMAL TRANSMITTANCE



**0,80**  
W/(m²K)

WATERTIGHTNESS CLASS



**6A**

WATERTIGHTNESS AT WIND SPEED



**73km/h | 250Pa**

AIR PERMEABILITY CLASS



**4**

STANDARD

### CarbonCore Magnet WeatherSeal

THERMAL TRANSMITTANCE



**0,71\***  
W/(m²K)

WATERTIGHTNESS CLASS



**9A**

WATERTIGHTNESS AT WIND SPEED



**114km/h | 600Pa**

AIR PERMEABILITY CLASS



**4**

RECOMMENDED UPGRADE

\* Additional insulation in profiles.

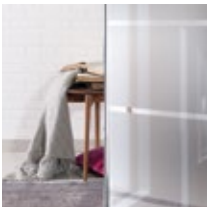
# Standard equipment.



Clear glass



Satinato glass



Clear glass motif sandblasted



Sealing system  
WeatherSeal



View outside  
DIN right



Flush alignment on the  
inside



Safety rosette  
cylinder



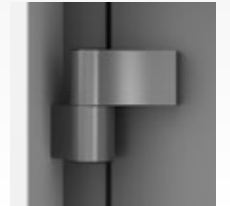
Triple glazing



3-point safety lock  
ARMO



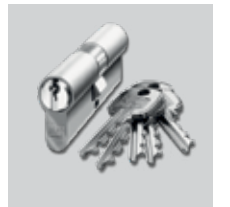
View inside  
DIN right



Three solid 3D adjustable  
hinges in door-colour



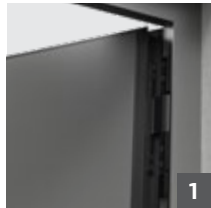
Stainless steel handle  
6039



Safety profile cylinder  
ARMO 1 with 5 keys



# Extra equipment.



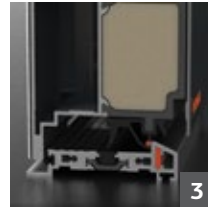
Concealed hinges



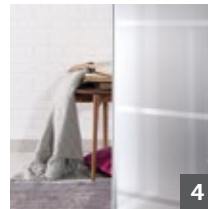
Additional insulation in profiles



View inside  
DIN left  
Concealed hinges



Sealing system  
**Magnet WeatherSeal**



Satinato glass motif  
sandblasted



View outside  
DIN left  
Concealed hinges



5-point safety lock  
ARMO



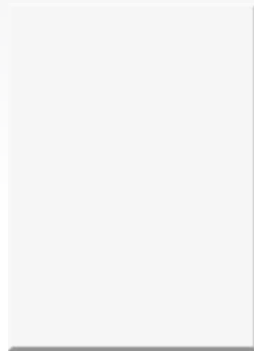
---

# Choose the colour

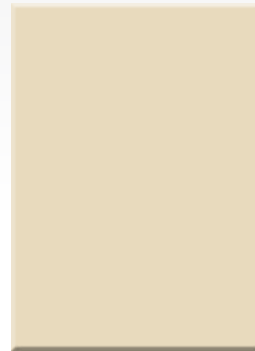
## ALU COLOURS STANDARD



White RAL 9016 gloss



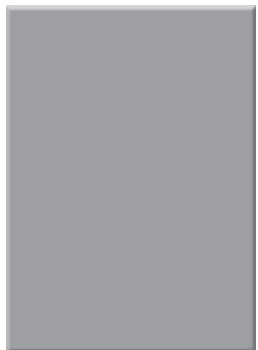
White RAL 9016 matte



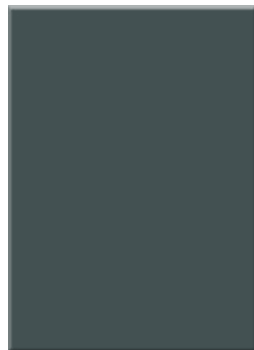
RAL 1013 matte



RAL 7040 matte



RAL 7004 matte



RAL 7012 matte



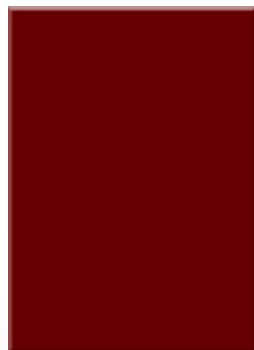
RAL 7016 matte



RAL 8016 matte



RAL 8019 matte



RAL 3004 matte



RAL 5002 matte

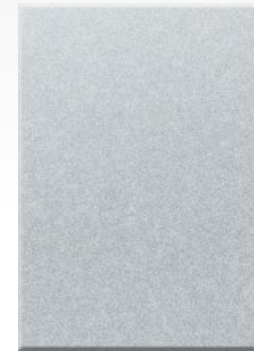


RAL 6005 matte

## ALU COLURS METALLIC AND FINE STRUCTURE



RAL 9006



90146



FS 9016



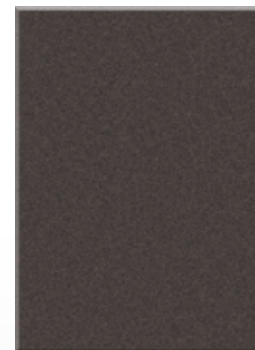
7016



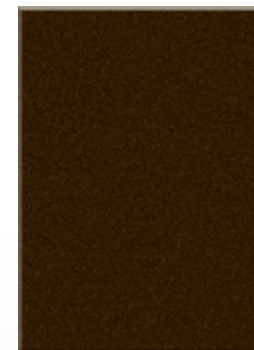
70105



80077



70784



FS 8019



FS 6005



ALU COLOURS WOOD DECOR



RAL 9007



90147



FS 8016



70161



FS 3004



FS 9005



English Oak



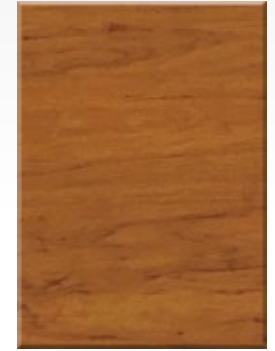
Rustics



Golden Oak



Oiled Oak



Oak Winchester



Dark Oak



Black Oak



Cherry



Vintage old dark wood



Concrete Imitation



Natural Oak



Twisted Oak



Olive

Visit the nearest Pinar showroom for more information and samples of available woods and wood decors.

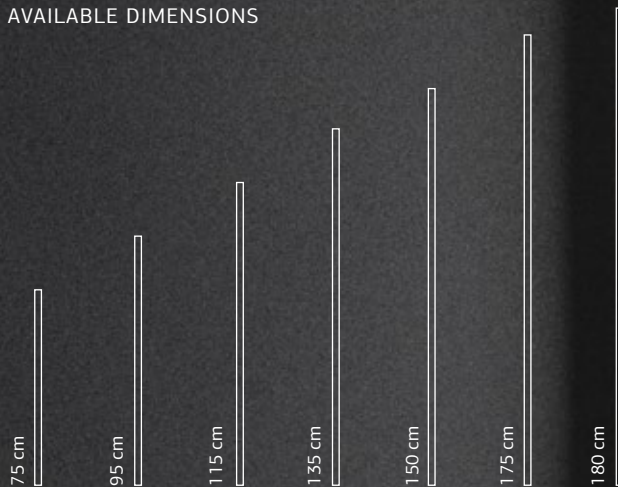
The wood decor sample measures 100 cm x 140 cm.

---

# Bar handles to make an entrance with

Handles are the most personal part of the door. Every resident touches it at least a thousand times a year, which is why PIRNAR pays special attention to them. We select one of the basic forms, either round or angular, and determine the exact length choosing from 750 mm, 950 mm, 1150 mm, 1350 mm, 1500 mm, 1700 mm or 1800 mm. To ensure the best impression and a personal touch, we have created several series of unique illumination upgrades of handles that use patented technology and that were awarded the prestigious international German Design Award Special 2019.

## AVAILABLE DIMENSIONS



Please contact the Sales Department for further details on the full range of handles and illumination upgrades.

ROUND



ROUND



ANGULAR



ANGULAR



NERO  
EDITION





Welcome to  
**PIRNAR's**  
digital world

## LABELUX

The technology patented by pinar will make your surname or any other inscription shine out from the surface of a handle, fully levelled with the surface. This magical detail remains even while the handle is in use.



## LUX

Soft ambient illumination of a vertical or plain door handle illuminates the entire house, creating a beautiful and magical atmosphere and feelings of safety and comfort in your home.

# Additional Equipment

The choice of door handle and accessories underlines your style and leaves no doubt about your sense of aesthetics.



6022

6055 ANGULAR STYLE

6022 NERO

6055 ANGULAR STYLE NERO

6022 LUX

6057 LUX

NERO  
EDITION

Please contact the Sales Department for further details on the full range of handles and illumination upgrades.



STAINLESS STEEL PROTECTIVE TRIM





---

## Relax

Take advantage of upgrades that offer top notch comfort and safety. Open the door by using only a finger. Forget about searching for the key or being left standing in front of the entrance without it. Treat yourself with a secure automatic locking system, connection to the intercom or remote control system. With high-tech fingerprint technology you will stay safe and become master of your home.







---

# Complete security and comfort

## ARMO

Classic three-point unlocking with a modern security cylinder lock with two massive hooks and five keys.

- Upgrade possible with secure five-point ARMO MAX lock.

## ARMO COMFORT

Upgrade of the standard ARMO version, with

- automatic mechanical locking and
- anti-locking setting that allows the door to be opened comfortably from the outside with a single push.

## ARMO COMFORT ELECTRO WITH SECURO FINGERPRINT SCANNER

- Superior comfort and unsurpassed security
- Enables connection to remote unlocking systems and fingerprint scanners
- Allows motorized keyless unlocking and automatic mechanical locking.

# OPTIMUM TABLE OF CONTENTS



7110 → 5



7130 → 17



7150 → 16



7160 → 10



7180 → 13



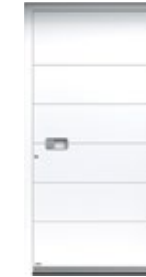
7190 → 20



7200 → 6



7210 → 6



7211 → 5



7230 → 19



7270 → 17



7280 → 10



7290 → 10



7300 → 23



7310 → 13



7320 → 12



7330 → 19



7340 → 21



7370 → 20



7390 → 23



7410 → 14



7450 → 15



7460 → 14



7470 → 11



7471 → 11



7480 → 8



7490 → 9



7500 → 8



7510 → 27



7510 → 27

Let our award-winning masterpieces impress you in person! Get a real feel for them in our showroom.





Pirnar models are protected by copyright. We reserve the right to change prices, text and technical description without prior notice. Pictures are symbolic and do not always reflect actual condition entirely. Variations in colour are possible due to the technical printing process. Colours should be checked using the RAL colour chart or wood patterns.

The surfaces of ALU Pirnar entrance doors are exceptional colour persistent, which is reached with special electrostatic powder-coating on prior chromated basis. The paint is based on the quality of provision RAL RG631. There are specified visual observation guidelines (viewing distance 5 m from the outside or inside 3 m).

Wood is a natural product. The individual parts of the work can show color differences despite the same kind of wood. Even a treatment with glazes sometimes can not eliminate this peculiarity. Sometimes these natural characteristic of wood can not be eliminated even with coating. The resulting color differences must be tolerated as well as deviations from color patterns.





**PIRNAR.**

**Pirnar d.o.o.**

Bravničarjeva ulica 20  
SI-1000 Ljubljana, Slovenia

T +386 1 563 39 02

F +386 1 563 39 01

E [sales@pirnar.si](mailto:sales@pirnar.si)

[www.pirnar.co.uk](http://www.pirnar.co.uk)